

MemoCam™ Plus

ALL IN ONE DIGITAL CCTV SYSTEM

Patent Pending

Covert Digital Video Recorder with removable Memory Card + Camera + **Video Motion Detection** + PIR

Event
recording
has never been
so easy



A compact, palm-size CCTV System that records and stores events on a removable Memory Card.

- Internal CCD Camera.
- 2 Video inputs for additional external cameras.
- 1 Video output for real time monitoring and camera adjustment.
- VMD + PIR Dual Detection Technology.
- Stores up to 10,000 B/W images on MultiMedia Card (64MB MMC).
- Weekly Scheduler.
- Ultimate image quality.
- Easy to install and user friendly.



MemoCam™ Plus

Covert Digital Video Recorder with removable Memory Card + Camera + Video Motion Detection + PIR

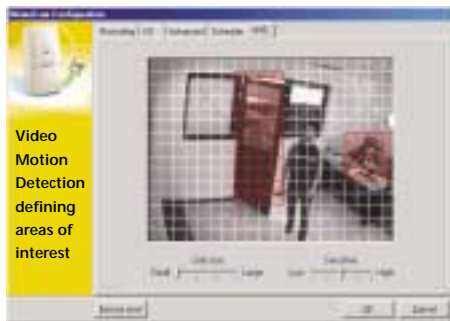
The MemoCam Plus automatically records events on the Memory Card following an alarm. The alarm can be activated by external triggers and/or by the internal VMD and/or PIR detector.

The VMD + PIR dual detection technology, significantly increases the reliability of the motion detection, thus reducing false alarms.

The VMD enables the user to define specific areas of interest within the picture frame.

The recorded events are easily analyzed by simply removing the Memory Card from the unit and inserting it into a Memory Card Reader connected to a PC.

The remote control unit enables the user to Arm/Disarm the event recording process or record events manually.



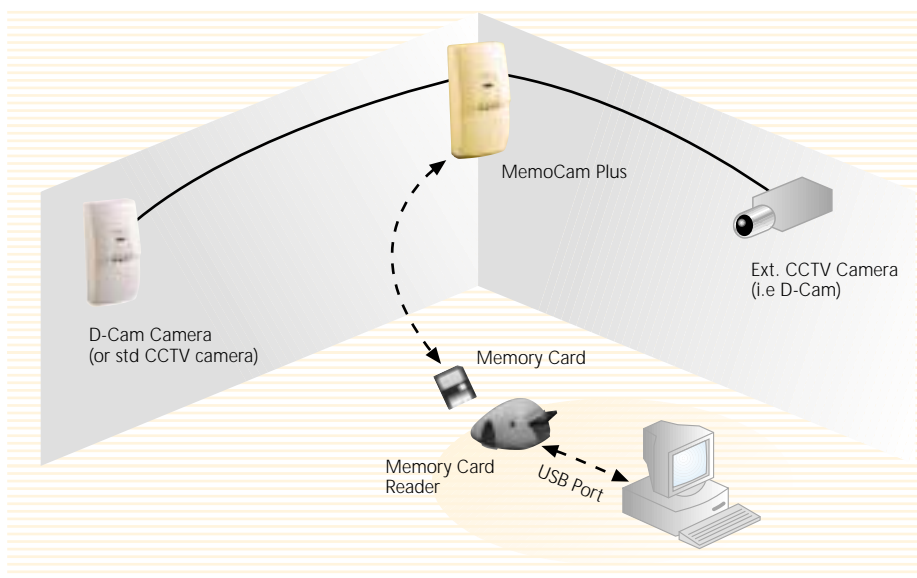
BENEFITS

- The MemoCam Plus is a compact CCTV system that replaces the traditional VCR with external VMD, external PIR, CCD camera and complicated cable installation.
- Adding 2 external cameras, converts the unit into a multiple camera CCTV system, significantly reducing the cost per video input.
- The Video Output enables the user to view live video from a selected camera when connected to a CCTV monitor. This feature simplifies the camera adjustment process and provides additional monitoring capability.
- The built-in weekly Scheduler enables the user to automatically Arm/Disarm the system at predefined times and days.
- Simple automatic setup on the Memory Card defines the: image quality mode, camera visual parameters, frame rate and number of frames per event.
- There are 2 recording modes:
Fixed - Records events until the Memory Card is full.
Cyclic - Records events successively, overriding old data when the Memory Card is full.
- Image Integrity - each image is digitally signed and can be authenticated.
- The fully functional PIR can be connected to an external control panel.
- The 3 color-coded LEDs indicate the status of the unit.

TECHNICAL SPECIFICATIONS

Video Inputs	2 (for external cameras)
Video Output	1 (for adjustment & monitoring)
Dry contact Input	3 (for external triggers)
Relay Output	2
Internal VMD	Yes
Weekly Scheduler	Yes
Removable MMC type	8, 16 std, 32, 64 MB storage
Compression Format	JPEG
Recording Quality	Good, Great, Better, Best
Image Size	5-20 KB / image
Recording Rates	From 3 images/second to 1 image/5 minutes
No of images per event	1 to 101 images
Internal Camera	B&W Pin Hole lens
Internal PIR	Dual element detector
PIR Lens Type	Hard Spherical Lens
PIR Detection Speed	0.3-1.5 m/sec (1-5 ft/sec)
PIR Temp. compensation	Yes
PIR Coverage	Wide angle 90o 18m x 18m (60ft x 60ft)
Current Consumption @ 12 VDC	Total 500mA max. Pir only 30 mA max.
Unit Dimensions (mm)	67 x 135 x 56 (W x H x D)
Weight	250 g

SYSTEM DIAGRAM



POPULAR APPLICATIONS

Commercial - Event recording in retail stores, gasoline stations, parking lots, restaurants, museums, hotels, etc. for loss prevention, shoplifting confirmation, inventory control, sales transaction record, stock room access verification, attendance identity control, analyzing shopping habits.

Home - "Nanny Watch" - activity record, home visitor and intruder control - use as Video-Door-Phone with recording capability.

Offices - Entrance/Exit record, trespass verification in confidential locations, after-hours activity record.

Banks - Monitor Safe box, ATM cash withdrawal verification, hold-up verification.

Hospitals - Monitor pharmaceutical supplies, stock room control, trespass verification in confidential locations.

Construction sites - Construction materials theft control.

Remember - criminals are camera shy!



VIDEO DOMAIN
www.vdomain.com